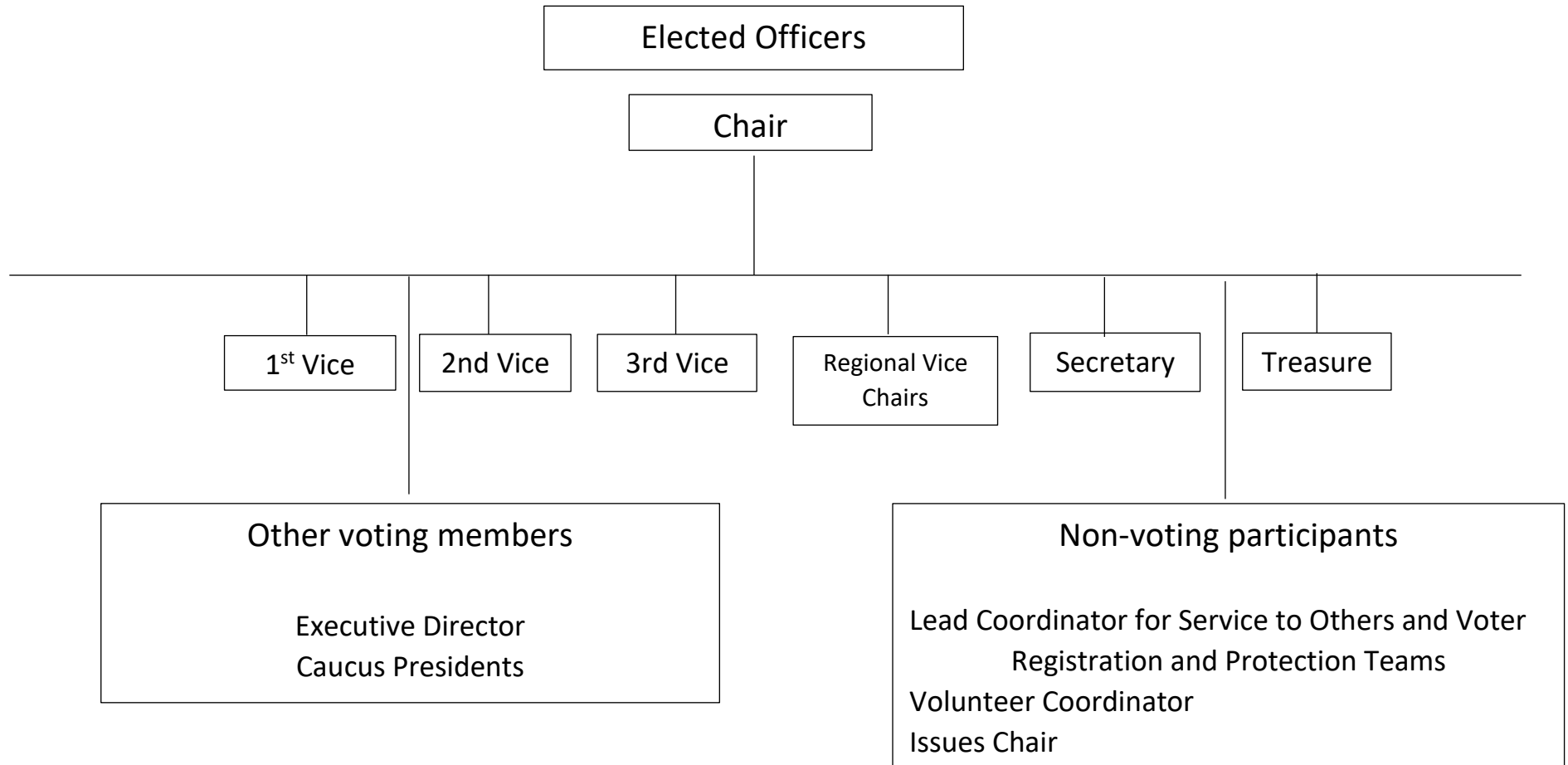


## GCDP Organizational Chart

Officers of the County Executive Committee  
(AKA Officers' Board)  
Meets 2<sup>nd</sup> Monday of each month



## Precincts

### Membership

- Registered Democrats who live in a specific precinct and attend precinct meetings

### Officers

- Precinct chair, vice chair, treasurer, secretary
- Treasurer and secretary can be the same person
- Precinct officers may not reside in the same house

### Order of business

- Elect precinct officers
- Elect delegates to the County Convention (number of delegates is allotted according to a state formula)
- Collect donations to the sustaining fund

### Suggested precinct activities include but are not limited to:

- Communicating GCDP information sent to precinct chairs
- Recruiting volunteers within the precinct to help with all aspects of elections
- Canvas/phone bank within the precinct
- Hold precinct events (social, educational, candidate forums, etc.)

## County Executive Committee (CEC)

### Membership

- Chairs and Vice Chairs of all organized precincts
- Elected officers of the County Executive Committee
- Any member of the state executive committee from that county, not a member of the county executive committee by virtue of holding some other office, shall be an ex-officio, voting member of the county executive committee.
- All Democratic state, county, and city elected officials (whether elected in a partisan or nonpartisan election) and Democratic members of the North Carolina General Assembly residing in the county shall be ex-officio, voting members
- Any elected or appointed officer of a district executive committee or the state executive committee residing in the county
- A county party Attorney, appointed by the county Chair and serving at the Chair's pleasure

### Duties

- Elect members to recommend to the Governor for appointment to the County Board of Elections
- In case of a vacancy, elect replacements to recommend to members of the relevant Board/Council NOTE: Only CEC members from the affected district will be involved in filling vacancies. This is called the Municipal Executive Committee.
- In case of a vacancy among the Officers of the Executive Committee, the CEC will elect a replacement

## County Convention

### Order of Business – Odd-Numbered Years.

- Elect officers of the county executive committee;
- Elect members of the state executive committee;
- Elect delegates to the annual congressional district convention;
- Elect two members of the congressional district executive committee, which members shall be the chair and the first vice chair of the county executive committee,
- Vote on resolutions brought to the floor,
- Conduct any other business related to the affairs of the county party.

### Order of Business – Even-Numbered Years.

- Elect, delegates to the annual congressional district convention and to the biennial state convention
- Elect two (2) members of each of the following:
  - The prosecutorial district executive committee,
  - The state senatorial district executive committee
  - The state house of representatives district executive committee;
- Vote on resolutions brought to the floor;
- Conduct any other business related to the affairs of the county party.

### Voting

- Allocation: Each precinct shall be entitled to cast in the county convention one (1) vote for every one hundred (100) votes, or major fraction thereof, cast by the precinct for the Democratic nominee for Governor in the last preceding gubernatorial election; provided that each precinct shall be entitled to cast at least one vote at the county convention
- Votes Divided Among Delegates Present. The precinct delegates who attend the county convention shall be entitled to vote the full strength of their precinct upon matters of business which come before the convention, provided that precinct originally elected at least one delegate for each vote to which it was entitled, as provided in Section 1.08. Each such delegate present from a particular precinct shall cast an equal number of the votes to which the precinct is entitled. All votes which the precinct is entitled to cast shall be divided equally among all the delegates representing the precinct who are in attendance.

### Quorum

- Quorum. At the county convention, a quorum shall exist at any time at which there is present on the floor at least one official delegate from fifty percent (50%) plus one (1) of the precincts with duly elected delegates to said convention

## Congressional District Convention (CDC)

### Order of Business

- Odd-Numbered Years.
  - Elect officers of the congressional district executive committee;
  - Conduct any other business related to the affairs of the congressional district.
- Even-Numbered Years.
  - Elect one member of the biennial State Convention's Committee on Credentials and Appeals;
  - Elect one member of the Council of Review;
  - Elect one member of the Resolutions and Platform Committee.
  - In each presidential election year, elect the number of delegates first and then alternates to the Democratic National Convention allotted to each congressional district.
  - In each presidential election year, one Presidential Elector from the congressional district;
  - Adopt the method for reviewing, editing, consolidating, adopting, and prioritizing resolutions most appropriate for the district party
  - Conduct any other business related to the affairs of the Congressional District.

### Voting

- (1) vote for each three hundred (300) persons, or major fraction thereof, residing within the county and within the congressional district based upon the last decennial census
- Votes will be divided equally among the county representatives in attendance

## State Executive Committee (SEC)

### Order of business

- Elect State Party Officers (elected on odd number years)
- Resolutions brought forward by individual county conventions
- Other business as needed

### Members

- Members elected by the individual county conventions held on odd number years
  - Each county is allotted a specific number of members based on a formula.
  - Half must identify as female and half must identify as male
- elected officers, appointed officers, ex-officio officers, ex-officio members, congressional district chairs, any other members of the state executive council and county chairs

### Term of office

- 2 years

### Attendance

- Any member missing 2 meetings during their term without sending a proxy will be removed from the SEC and a replacement will be elected at a CEC meeting.